



Kingsgate

Consolidated Limited

ABN 42 000 837 472

13 September 2023

**Via ASX Online
(8 Pages)**

FOR PUBLIC RELEASE

Manager
Company Announcements Office
Australian Securities Exchange

Chatree Gold Mine Overhaul Update

Kingsgate Consolidated Limited (ASX:KCN) ("Kingsgate or the Company") is pleased to provide a status update on the Chatree Gold Mine overhaul, which includes the following key highlights:

- The optimisation of Plant #2 with upgrades to the CIL Circuit to improve production;
- Excellent progress on the various work packs underway across the crushing, grinding, CIL/Elution, Gold Room, and tailings reduction areas of the Plant #1 Overhall Project;
- The dewatering of A Pit North is progressing well, with 3,200 cubic metres of water being pumped out per day, and more than 3 million litres of water pumped to date; and
- A total of **\$16.1 million** in cash and cash equivalents on hand as of 8 September 2023.

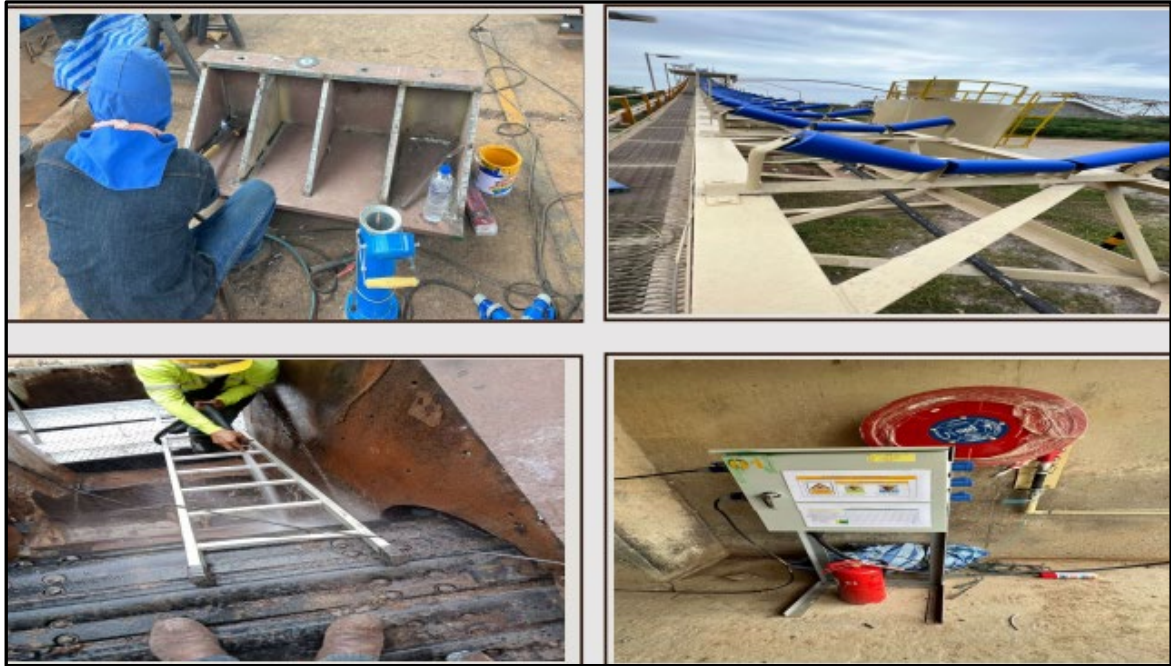
Plant #1 Overhaul Project

The Plant #1 Overhaul Project continues to make strong progress and key areas of work in the Crushing Circuit in August and September included:

1. Concreting the ROM bin wall;
2. Painting and repairing the raw water pipes;
3. Connecting a power source to the pump motor;
4. Sandblasting the apron feeder;
5. The installation of a temporary power panel;
6. Removing the chute and liner;
7. Replacing carry roller #01CV01; and
8. Fabricating and welding the grizzly feed chute.



Crushing Circuit overhaul above (left to right): CV001 repairs, ROM bin concreting, raw water pump replacement and piping, fabricating and welding the grizzly feed chute, and below (left to right): fabricating and welding the grizzly feed chute, replacing carry roller #01CV01, fabricating and welding the grizzly feed chute, electrical board safety information.



Key areas of work in the Reclaim Areas in August and September included:

1. Sandblasting and priming the apron feeder;
2. Continuing to paint the conveyor #02CV02;
3. Repairing chutes;
4. Repairing the damaged frame of a feed chute;
5. Continuing to fabricate the feeder; and
6. Installation of a temporary power panel.



Reclaim Area overhaul above (left to right): apron feeder sandblasting and painting, chute repairs x 2 and CV002 conveyor painting, and below (left to right): electrical safety board, feed chute repairs, apron feeder fabrication and chute repairs.



Key areas of work in the Grinding Circuit in August and September included:

1. Removing and replacing the rubber liner in the ball mill;
2. Installing scaffolding in the SAG mill;
3. Repairing conveyors #03CV04 and #03CV05;
4. Fabricating chutes and repairing hoppers;
5. Fabricating conveyor #03CV09;
6. Overhauling the motors of #04TK502, #04PU04, #04PU05
7. Installing scaffolding inside tank #04TK499;
8. Installing motors #04PU73, #04PU05;
9. Installing a temporary power panel;
10. Disconnecting the electrical control panel on the Cyclone;
11. Painting hoppers, handrails, and stairs; and
12. Removing the Cyclone and overhead crane.



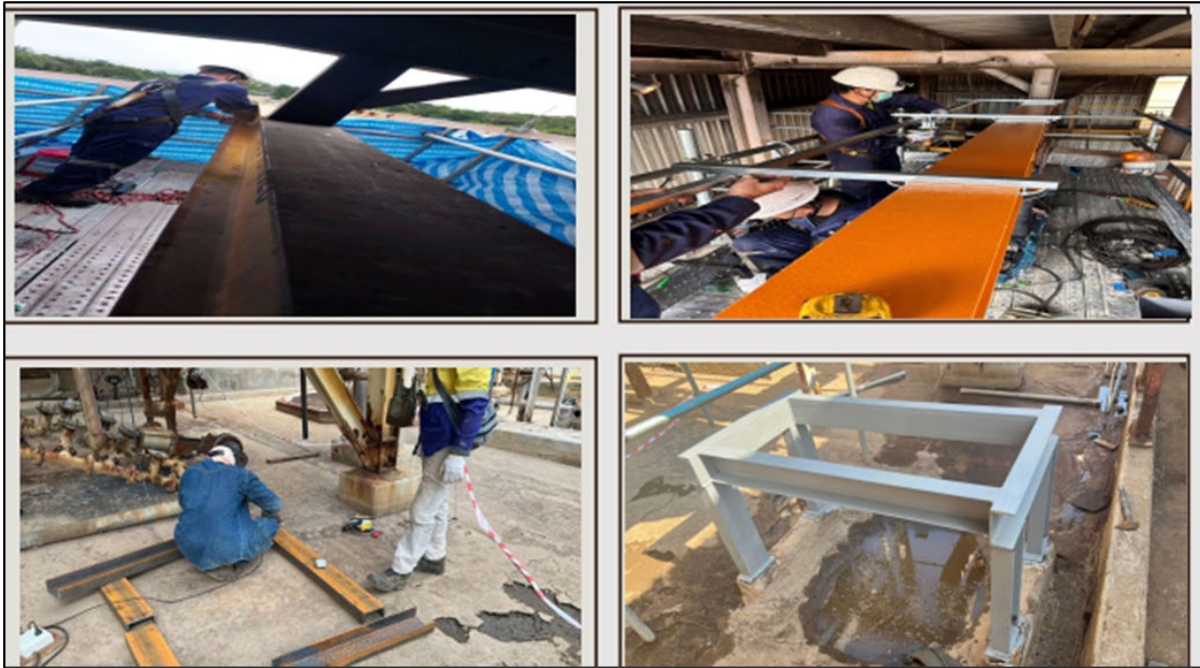
Grinding Circuit repairs above (left to right): SAG mill rubber lining removal, structure frame for conveyor CV09, repairs to conveyor hopper and conveyor frame repairs CV04.



Removal of the Cyclone separator for replacement from Plant #1.

Key areas of work in the CIL/Elution Circuits in August and September included:

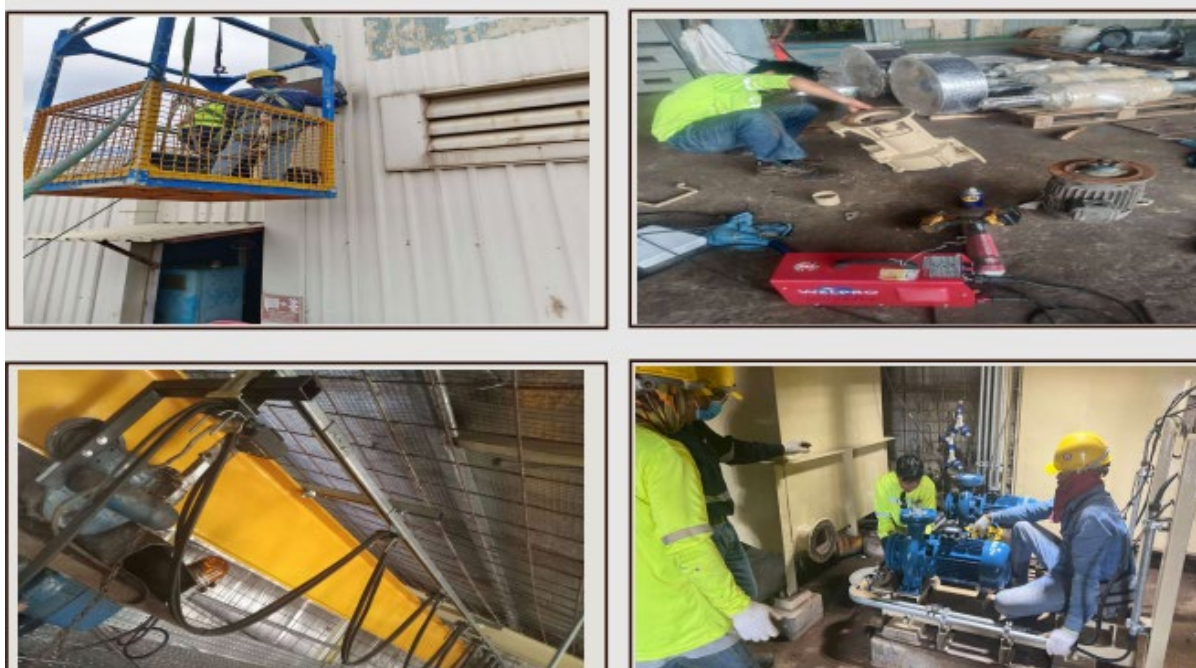
1. Installing scaffolding for piping work;
2. Repairing the sump pump saddle;
3. Overhauling motors of #04TK502, 04PU04, 04PU05;
4. Installing scaffolding inside tank;
5. Installing temporary power panel; and
6. Fabricating support sump pump #05PU08.



Elution circuit repairs (left to right): structure repairs, Regain Kiln crane replacement, structure replacement and sump pump frame.

The Gold Room repairs are now more than 90% complete, and the key areas of work in August and September included:

1. Fabricating the raw water pipes;
2. Painting steel columns;
3. Replacing the cable tray and connected the lighting;
4. Replacing lighting and installed cable panel;
5. Overhauling overhead crane #06HT05;
6. Overhauling pump #06PU14; and
7. Installing pump #06PU58 A, and B.



Gold Room repairs (left to right): light replacement, overhaul of the diagram pump, new gantry crane and new gold circuit pump installation.

Kingsgate's Executive Chairman, Ross Smyth-Kirk OAM said, "It's very pleasing to see the high quality of work from Akara personnel reflected in the overhaul of Plant #1. We're continuing to push ahead with Plant #1, and it's being ably supported by Plant #2 which continues to generate good cashflow from the low-grade stockpiles".

Ross Smyth-Kirk OAM
Executive Chairman
KINGSGATE CONSOLIDATED LIMITED